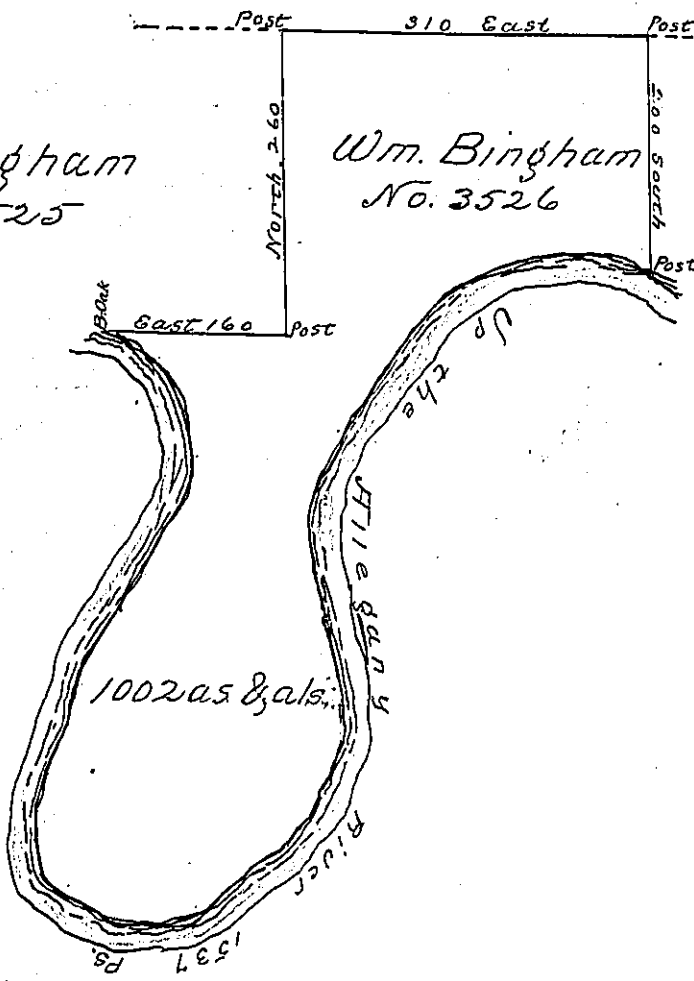


Wm. Bingham No. 3521

Wm. Bingham
No. 3525

Wm. Bingham
No. 3526



Courses & distances
up the Allegheny River

- Wm. Bingham
- N. 63. W. 74
 - West - 68
 - S. 72. W. 51
 - S. 52. W. 71
 - S. 31. W. 152
 - S. 5. W. 73
 - S. 10. E. 114
 - South 32
 - S. 16. W. 35
 - S. 33. W. 39
 - S. 51. W. 76
 - S. 67. W. 62
 - West 48
 - N. 58. W. 46
 - N. 21. W. 56
 - N. 3. E. 29
 - N. 10. E. 17
 - N. 36. E. 20
 - N. 14. E. 28
 - N. 24. E. 72
 - N. 31. E. 74
 - N. 35. E. 42
 - N. 27. E. 112
 - N. 22. W. 92
 - N. 66. W. 54
- 1537

In Pursuance of a warrant No. 3526 dated 14th day of Decr 1792 Surveyed 6th day of Augst. 1794 To William Bingham Esqr. the above described tract of Land situate on the main Allegheny River in the late Purchase Northumberland County in district No. 6 containing one Thousand & two acres & allowance of six plant.

p.

Jno. Brodhead L.S.

Daniel Brodhead Esqr.)
Surveyor General)

IN TESTIMONY that the above is a copy of the original remaining on file in the Department of Internal Affairs of Pennsylvania, made conformably to an Act of Assembly approved the 16th day of February, 1833, I have hereunto set my Hand and caused the Seal of said Department to be affixed at Harrisburg, this sixth day of August 1901

James W. Latta
Secretary of Internal Affairs.